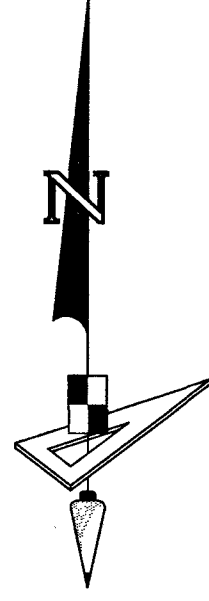


TERRACES OF WESTLAKE - PHASE I

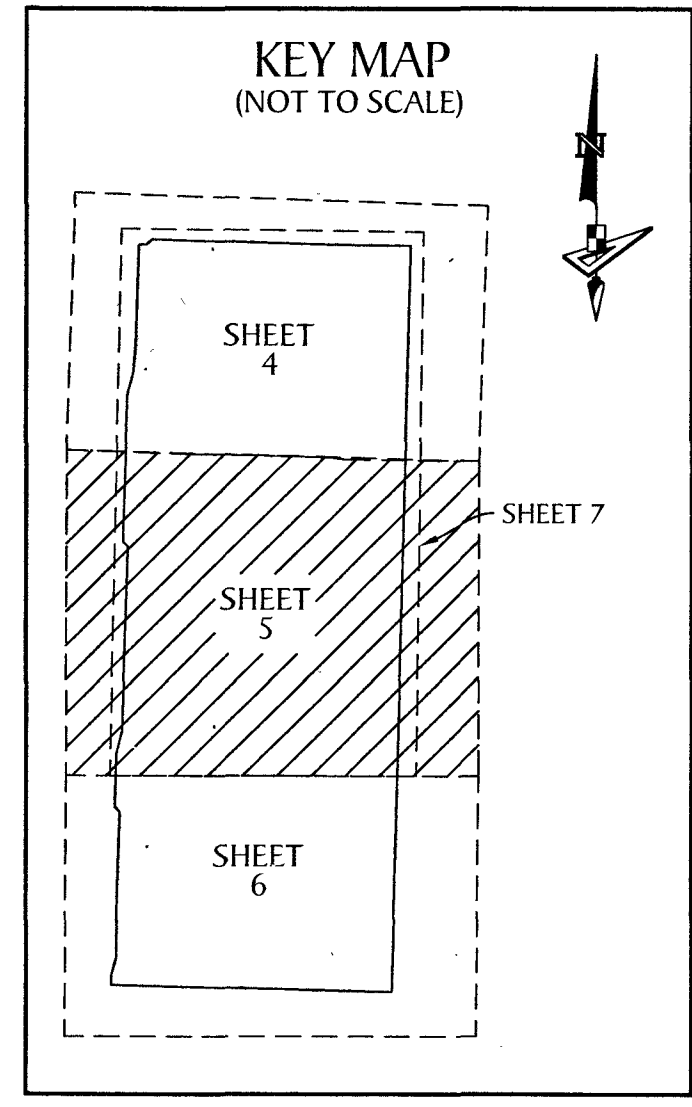
BEING A REPLAT OF A PORTION OF TRACT "A", WESTLAKE POD I AND POD J, PLAT BOOK 130, PAGES 153 AND 154, PUBLIC RECORDS OF PALM BEACH COUNTY, FLORIDA, LYING IN SECTION 12, TOWNSHIP 43 SOUTH, RANGE 40 EAST, CITY OF WESTLAKE, PALM BEACH COUNTY, FLORIDA.

LEGEND

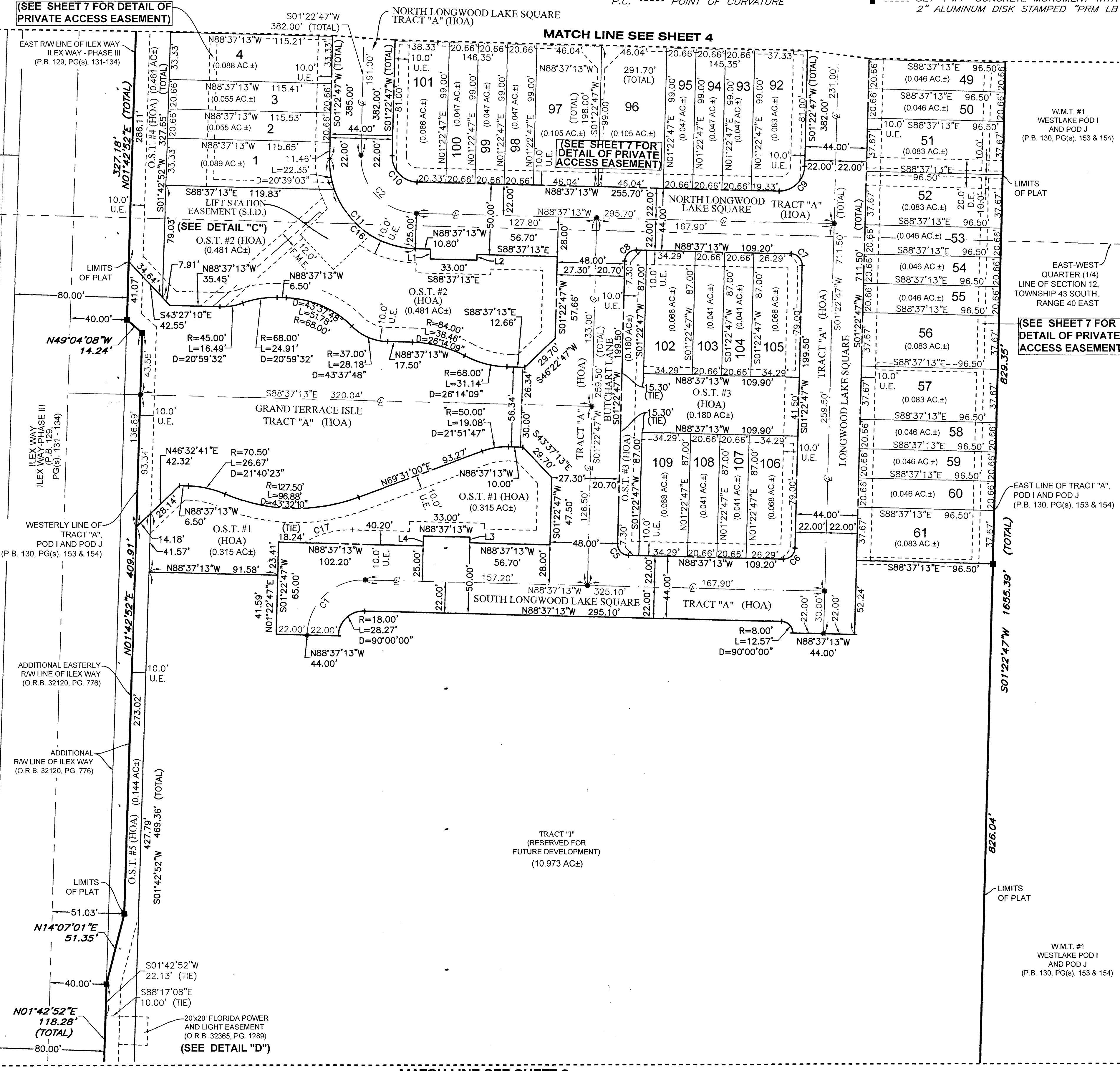
- P.O.B. ----- POINT OF BEGINNING
- P.O.C. ----- POINT OF COMMENCEMENT
- P.B. ----- PLAT BOOK
- D.B. ----- DEED BOOK
- R.P.B. ----- ROAD PLAT BOOK
- O.R./O.R.B. ----- OFFICIAL RECORDS BOOK
- PG./PG(s) ----- PAGE(S)
- NAD ----- NORTH AMERICAN DATUM
- W.M.T. ----- WATER MANAGEMENT TRACT
- O.S.T. ----- OPEN SPACE TRACT
- P.B.C. ----- PALM BEACH COUNTY
- U.E. ----- UTILITY EASEMENT
- D.E. ----- DRAINAGE EASEMENT
- F.M.E. ----- FORCE MAIN EASEMENT
- W.M.E. ----- WATER MAIN EASEMENT
- AC.±/AC± ----- ACRES
- LB ----- LICENSED BUSINESS
- R ----- RADIUS
- L ----- ARC LENGTH
- D ----- DELTA ANGLE
- CB ----- CHORD BEARING
- C ----- CHORD
- CL ----- CENTER LINE OF ROAD
- N.T. ----- NON-TANGENT
- N.T.C. ----- NON-TANGENT CURVATURE
- N.T.I. ----- NON-TANGENT INTERSECTION
- P.C. ----- POINT OF CURVATURE
- P.T. ----- POINT OF TANGENCY
- R.C. ----- REVERSE CURVATURE
- R/W ----- RIGHT-OF-WAY
- HOA ----- HOMEOWNERS ASSOCIATION
- S.I.D. ----- SEMINOLE IMPROVEMENT DISTRICT
- PRM ----- PERMANENT REFERENCE MONUMENT
- ----- PERMANENT CONTROL POINT
- ----- FOUND PERMANENT REFERENCE MONUMENT
- ----- SET 4"x4" CONCRETE MONUMENT WITH 2" ALUMINUM DISK STAMPED "PRM LB 7768"



SCALE: 1" = 40'



147



CURVE DATA TABLE

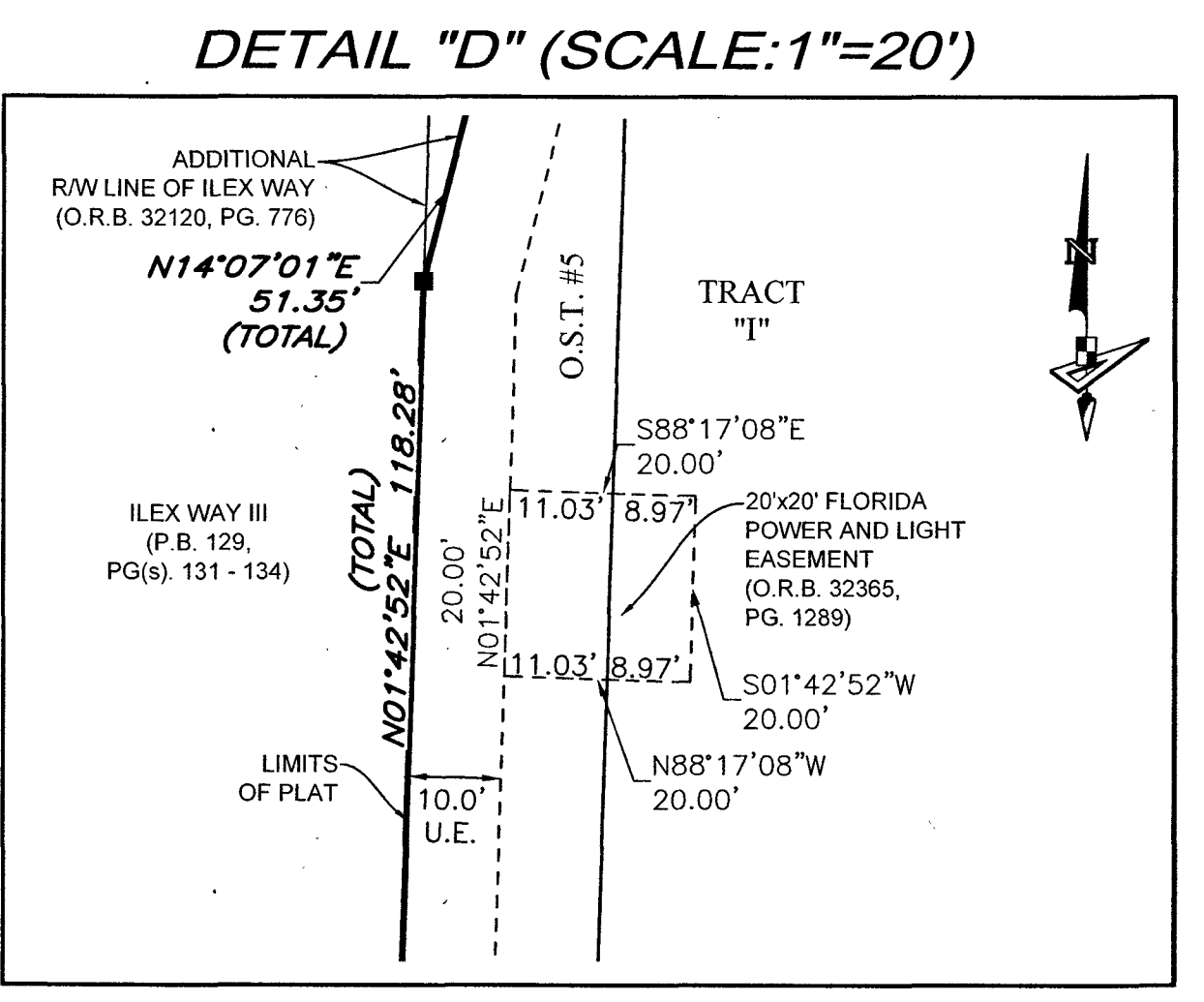
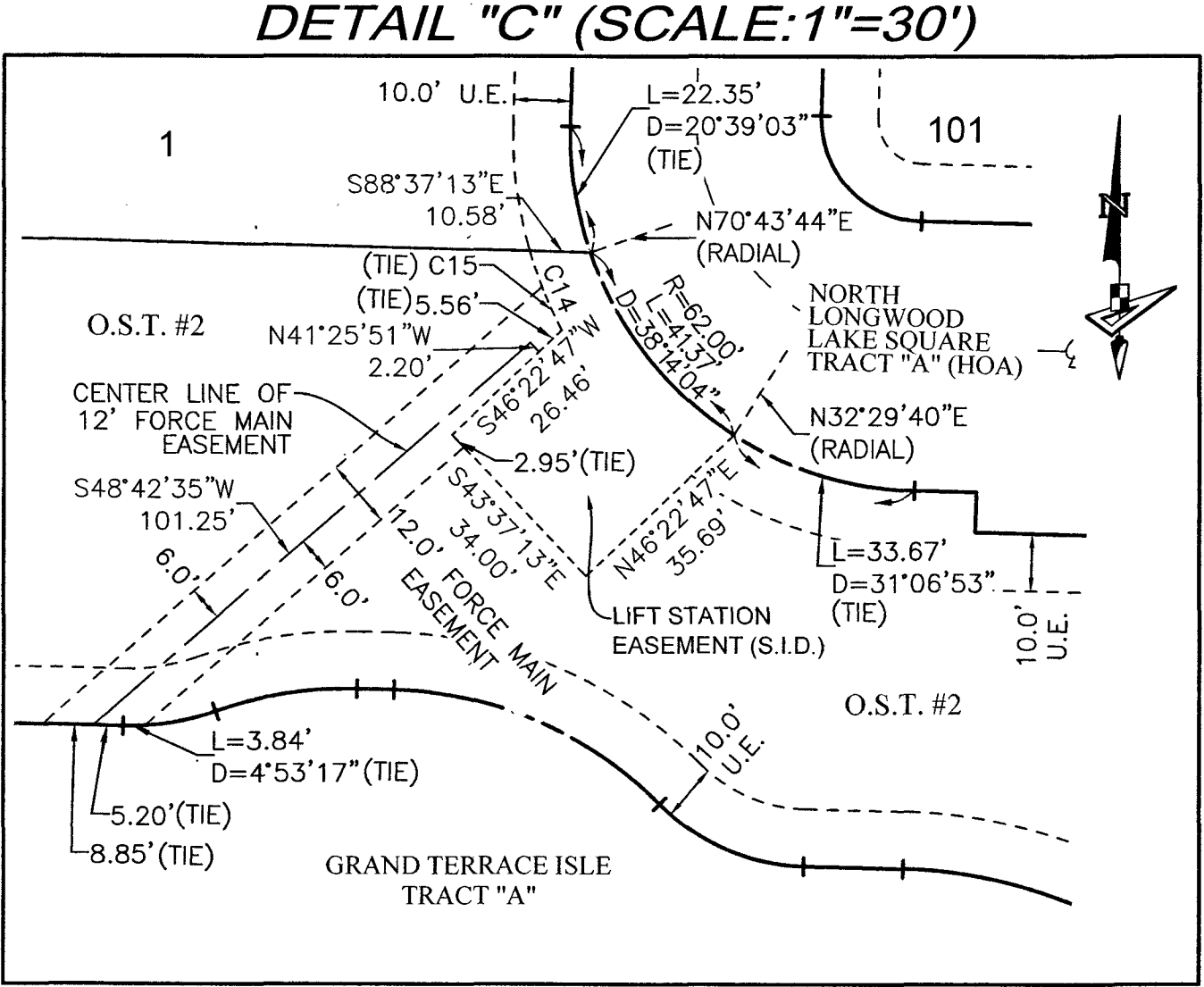
NO.	RADIUS	DELTA	ARC	CHORD	BEARING
C1	40.00'	90°00'00"	62.83'	56.57'	S 46°22'47" W
C2	40.00'	90°00'00"	62.83'	56.57'	S 43°37'13" E

CURVE DATA TABLE

NO.	RADIUS	DELTA	ARC
C5	8.00'	90°00'00"	12.57'
C6	8.00'	90°00'00"	12.57'
C7	8.00'	90°00'00"	12.57'
C8	8.00'	90°00'00"	12.57'
C9	18.00'	90°00'00"	28.27'
C10	18.00'	90°00'00"	28.27'
C11	62.00'	90°00'00"	97.39'
C14	72.00'	11°55'11"	14.98'
C15	72.00'	6°48'53"	8.56'
C16	62.00'	69°20'57"	75.04'
C17	62.00'	32°59'44"	35.70'

LINE DATA TABLE

NO.	BEARING	LENGTH
L1	S 01°22'47" W	7.00'
L2	S 01°22'47" W	4.00'
L3	N 01°22'47" E	4.00'
L4	S 01°22'47" W	7.00'



GeoPoint Surveying, Inc.

4152 W. Blue Heron Blvd. Suite 105
Riviera Beach, FL 33404

Phone: (561) 444-2720
www.geopointsurvey.com
Licensed Business Number LB 7768

Sheet No. 05 of 06 Sheets